

WARNING!

When in the closed position, Aluminium Tonneau Cover must be latched and tailgate must be closed. Failure to do so could result in unexpected opening of the Tonneau Cover from sudden wind gusts or driving conditions, which could cause damage to the vehicle and/or your Aluminium Tonneau Cover.

Secure any items tall enough to strike the Tonneau Cover lock mechanism.

DO NOT close the Tailgate when the Aluminium Tonneau is in the closed position, as damage may occur to the vehicle and/or your Tonneau Cover.

Do not operate vehicle while cover is open.

MAINTENANCE:

- Avoid the use of chemicals to clean painted surfaces, wash regularly with car wash detergent, hose off and chamois dry. Aluminium top sheet finish can be maintained with briteshine polish or similar. Un-maintained product i.e. surface finish degradations not covered by warranty.
- The gas struts are self lubricating and should only be cleaned occasionally with a damp cloth. Premature seal failure will result if solvents or lubricants are used to clean struts.
- Gas struts must be connected with the cylinder (wide) end to the Aluminium Tonneau Cover or Warranty is Void.
- The locking mechanisms and latches only require occasional lubrication with Graphite Powder.
- DO NOT use any other lubricants or oils. Using alternative products will VOID Warranty.
- All installation hardware and fasteners must be checked every so often for tightness.

TONNEAU COVER - IMPORTANT:

- Read instructions carefully before installation. It is strongly recommended that installation is conducted by a qualified mechanic.
- This product must be installed exactly as specified in these instructions. Failure to do so may result in improper fit and/or retention.
- Do not stand/sit or rest heavy objects on Tonneau Cover.
- Humans or animals are not to be under the closed Tonneau Cover at any time.
- Securely latch Tonneau Cover before operating vehicle.
- Do not carry open volatile chemicals with Tonneau Cover installed.
- If contact with volatile chemicals occurs clean Tonneau Cover with mild detergent and water solution.
- Recommend installation by 2 people.
- Fitting Instructions must be given to the end customer to understand correct removal and replacement process onto the vehicle.

Care Instructions:



Clean Tonneau Cover with a mild detergent and water solution.



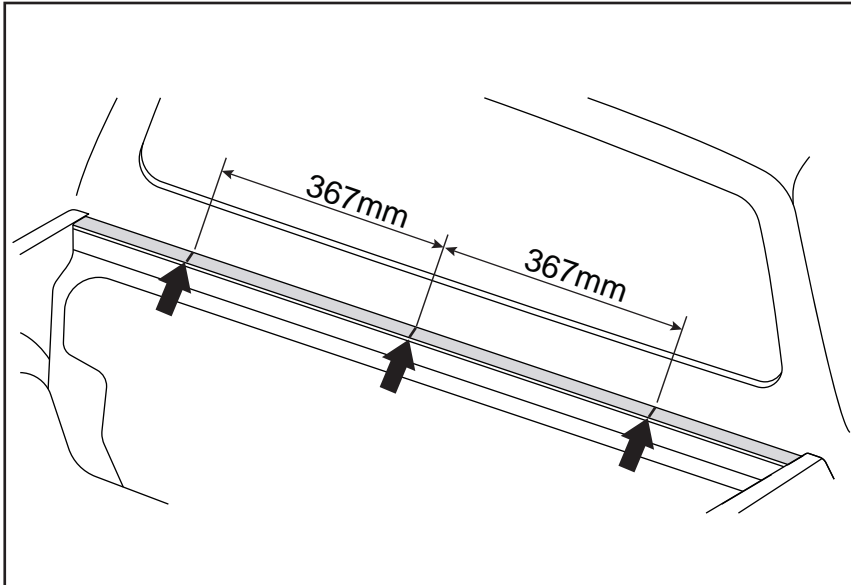
Do not use abrasive cleaners or solvents.

Tonneau Cover Assembly x1	Hinge Bracket x2	Striker Bracket x2	Striker x2
M10 Nut x8	M10 Washer x8	Gas Strut x2	Ball Stud x4
M8 Lock Nut x4	M8 Washer x2	Gas Strut Bracket x2	M6 Button Head Cap Screw x4
M6 Washer x4	Hinge Bracket Fixing Plate x2	4.8x14 Rivets x12	

REQUIRED TOOLS | EQUIPMENT



- | | | |
|----------------------------------|-----------------|-----------------------------------|
| 13mm and 17mm Socket | 4mm Allen Key | Cleaning Materials |
| ½" Drive Ratchet + Extension Bar | Rivet Gun | Masking Tape |
| 8mm, 13mm and 17mm Spanner | Tape Measure | Right Angle |
| Power Drill | Centre Punch | Rust Inhibitor |
| 5mm Drill Bit | Hammer | Personal Protective Equipment: |
| 8mm Drill Bit | Pencil / Marker | Safety Glasses, Ear Plugs, Gloves |
| | | (Scissors, Silicone)* Optional |



Step 1

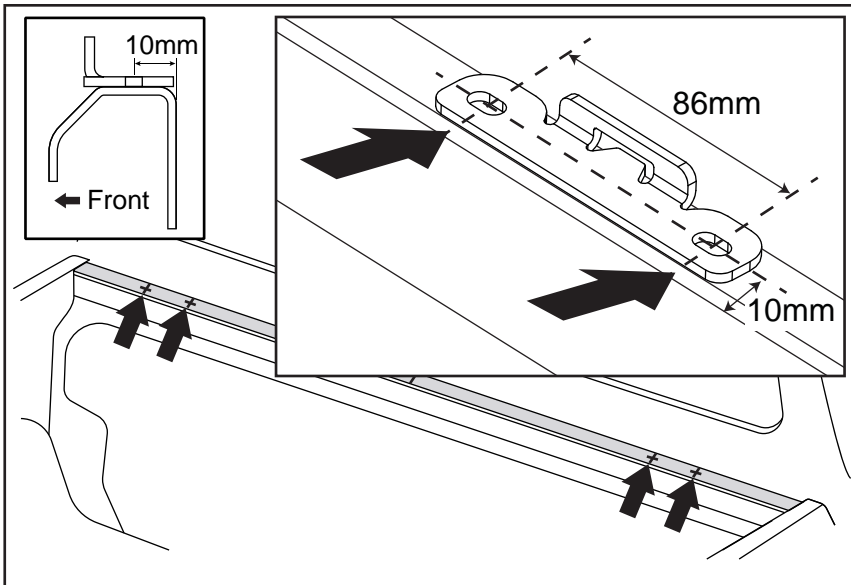
Required tools: Masking Tape, Marker Pen and Tape Measure.

- Clean the top surface of the tub.
- Apply masking tape on front rail top surface
- Accurately mark a line at the centre of the front rail.
- Mark two lines 367mm either side of the centre line.

Note: This instruction is for plain tub installation only. If tub liner is fitted, the liner will need to be trimmed to allow correct installation of the tonneau cover brackets and hinges. No spacers or additional media allowed between hinges/brackets and the vehicle tub.

Note:

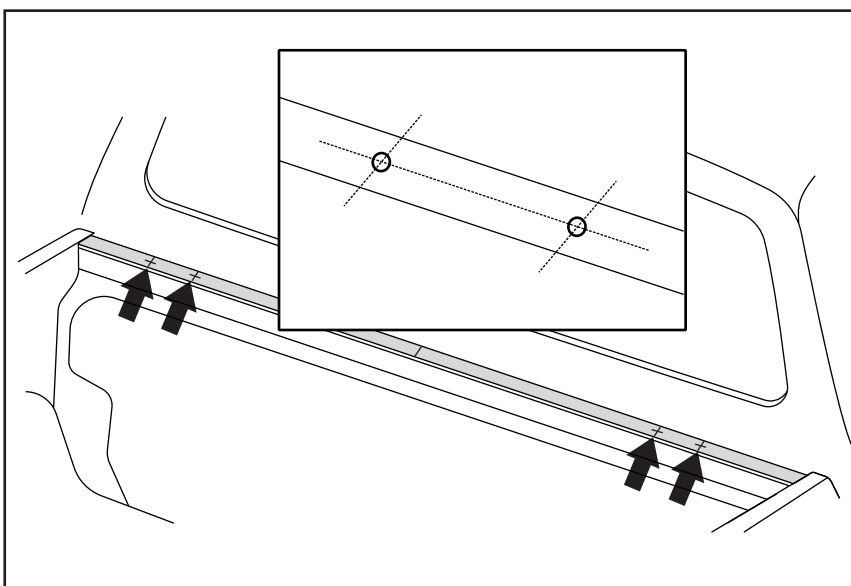
If fitted, cabin guard must be removed.
If installed, utility-track must also be removed.



Step 2

Required tools: Masking Tape, Marker Pen and Tape Measure.

- At the marked line, mark another line 86mm outboard from the line.
- Mark a line 10mm from the inside edge of the front tub rail, crossing both previously marked lines (use right angle and tape measure).
- Position Hinge Bracket to marked lines and check alignment.
- Repeat for both sides.

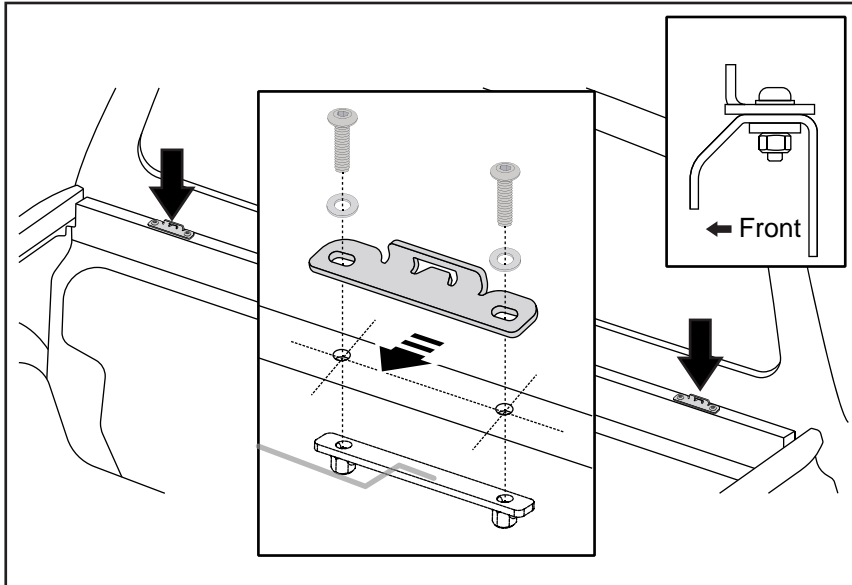


Step 3

Required tools: Power drill, 8mm drill bit and drill bit stopper, centre punch, hammer.

- Centre punch the two hole locations.
- Drill holes using a 8mm drill bit.
- Remove drill burr from the holes.
- Apply rust inhibitor to the drilled holes.
- Repeat for other side.

Note: Use drill stopper set at 10mm to avoid drilling too deep.

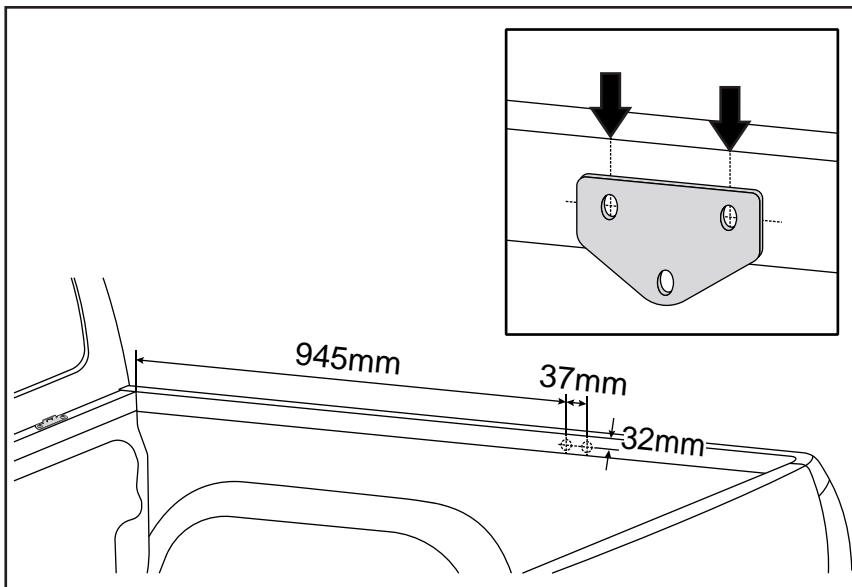


Step 4

Required tools: 4mm Allen Key.

- Position hinge bracket fixing plate inside the tub front rail, holding it by the wire to allow positioning the plate under the holes.
- Position hinge bracket and secure with supplied M6 bolts, washers to the hinge fixing bracket. Finger tighten only.
- Repeat for both sides.
- Move the hinge brackets as far away from the vehicle cab as possible with the M6 bolts finger tightened. This ensures maximum clearance between the tonneau cover and the cab.

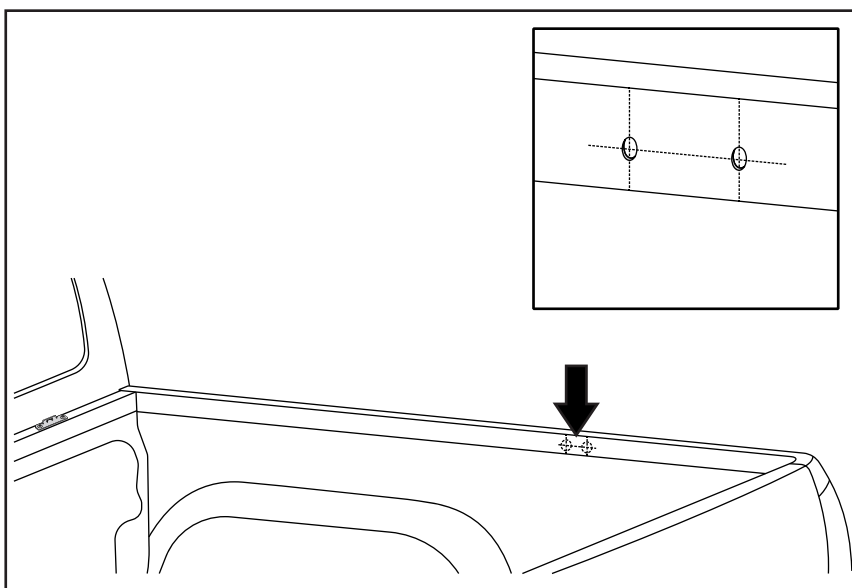
Note: Bend attached fixing plate wire as required to aid installation.



Step 5

Required tools: Masking Tape, Marker Pen and Tape Measure.

- Apply masking tape to the side rail inner surface and measure 945mm from the front rail inner surface, and mark location.
- Mark another line 37mm from this line, and a line 32mm from the top edge of the side rail, crossing both lines.
- Align Gas Strut Bracket with marked lines to confirm hole locations.
- Repeat for both sides.

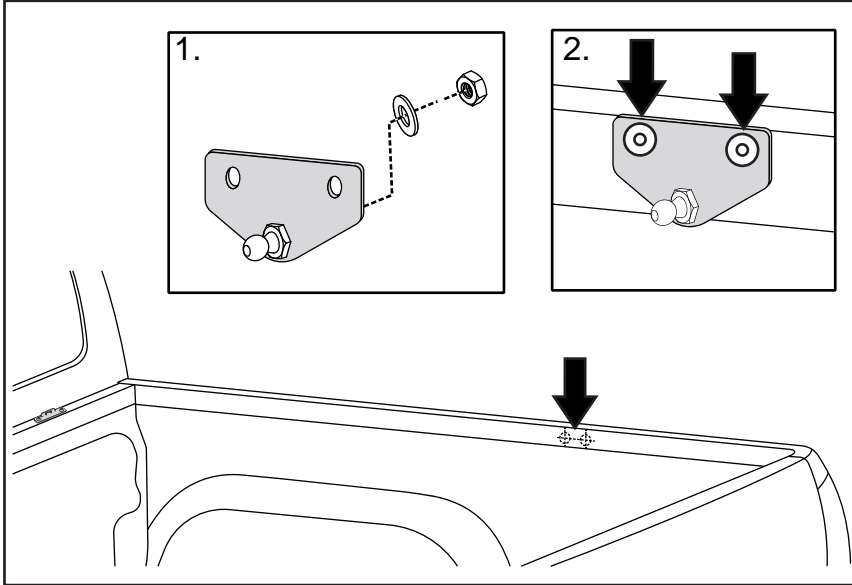


Step 6

Required tools: Power drill, 5mm drill bit and drill bit stopper, centre punch, hammer.

- Centre punch the two hole locations.
- Drill holes using a 5mm drill bit.
- Remove drill burr from the holes.
- Apply rust inhibitor to the drilled holes.
- Repeat for other side.

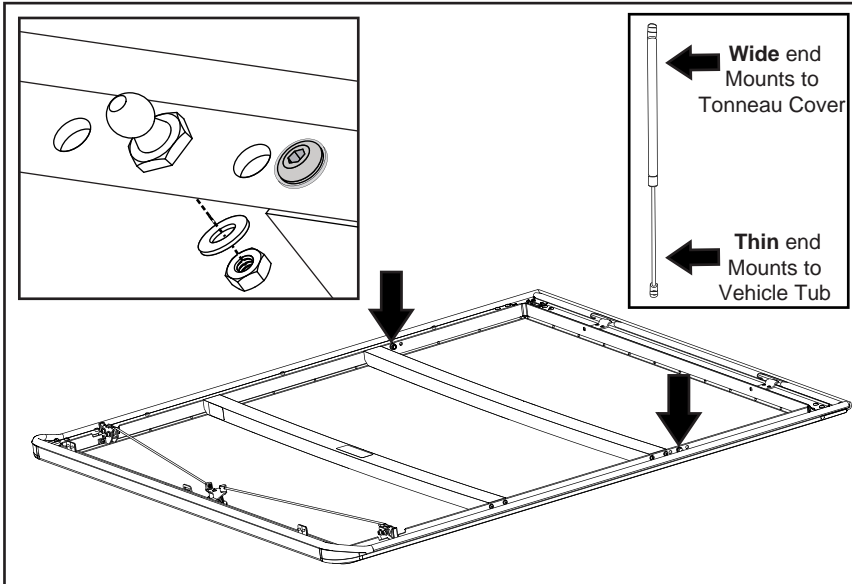
Note: Use drill stopper set at 10mm to avoid drilling too deep.



Step 7

Required tools: Rivet gun, 13mm spanner and 13mm socket and driver.

- Install the ball stud to the bracket using hex nut and washer and tighten it to 20.0 Nm.
- Install the gas strut bracket with supplied rivets.
- Repeat for both sides.



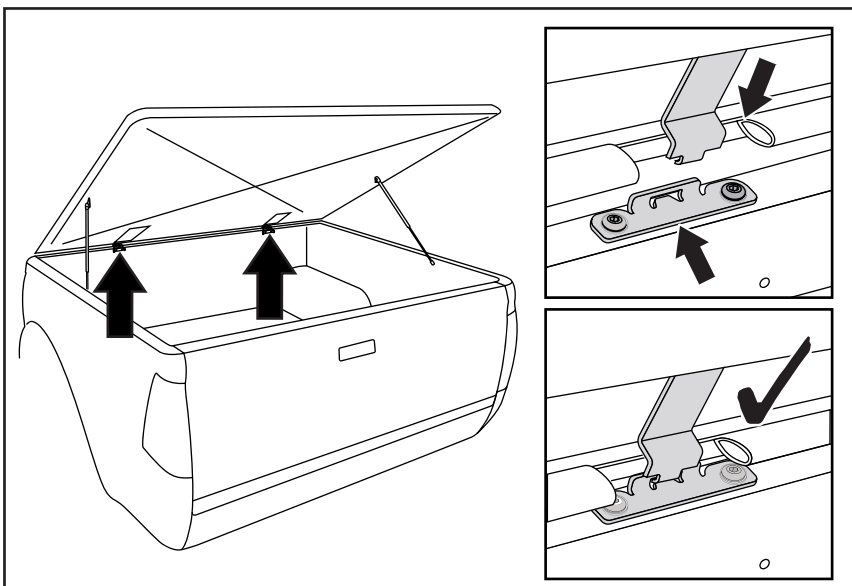
Step 8

Required tools: 13mm spanner, 13mm socket and driver.

- Install the ball stud with supplied hex nut and washer in the middle hole of the Tonneau. (Ball Stud to outside).
- Connect the wide end of gas strut by pressing it onto the ball stud.
- Repeat for both sides.

Note: The opening height of the tonneau cover can be adjusted by fixing the ball studs in either holes illustrated.

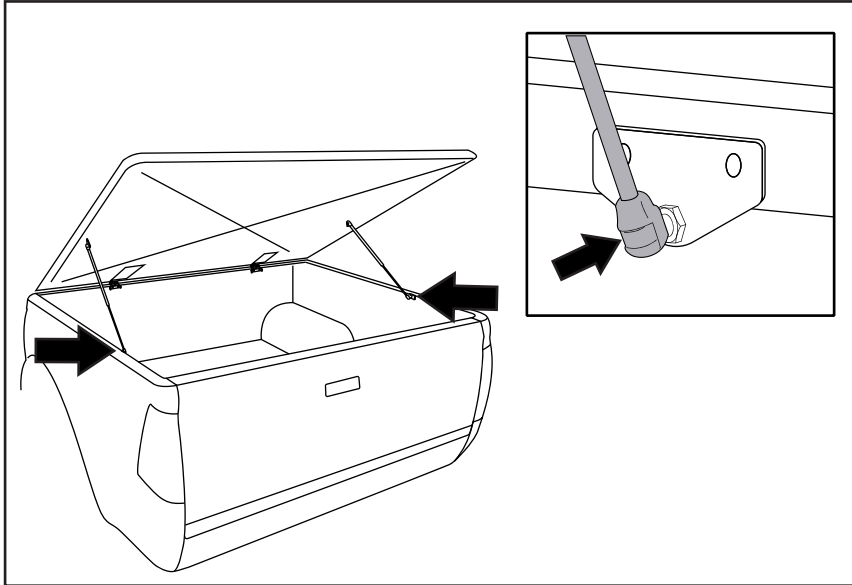
Note: Ensure the gas strut is installed in the correct orientation as shown. The wide end connects to the Tonneau cover.



Step 9

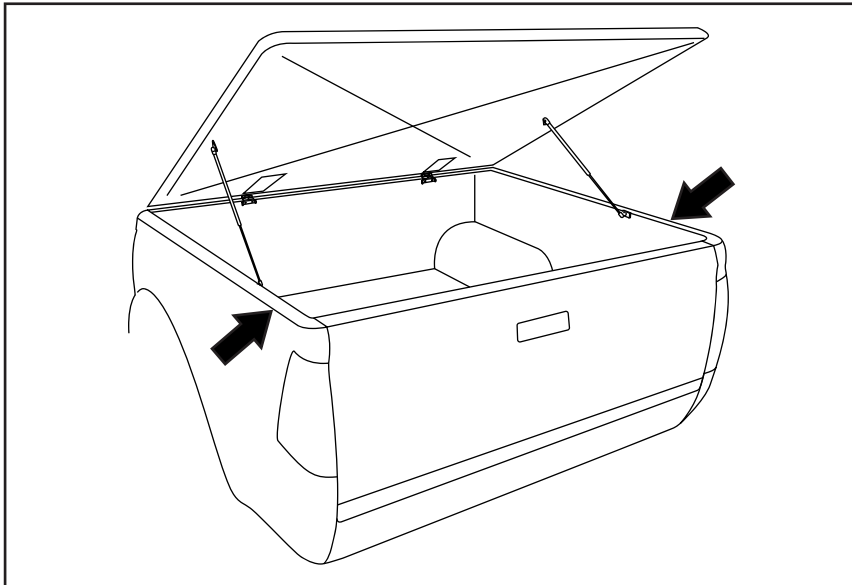
- Install the cover by letting the hinge tongue to rest on front of the hinge groove while holding the cover in a 60° angle.
- Move the cover toward the vehicle cabin to slide the tongue to the groove, ensure hinge parts fully engage.
- **Do not lower the cover yet.**

Note: When lowering the cover, ensure the front seal is not crushed between the front rail and the cover.



Step 10

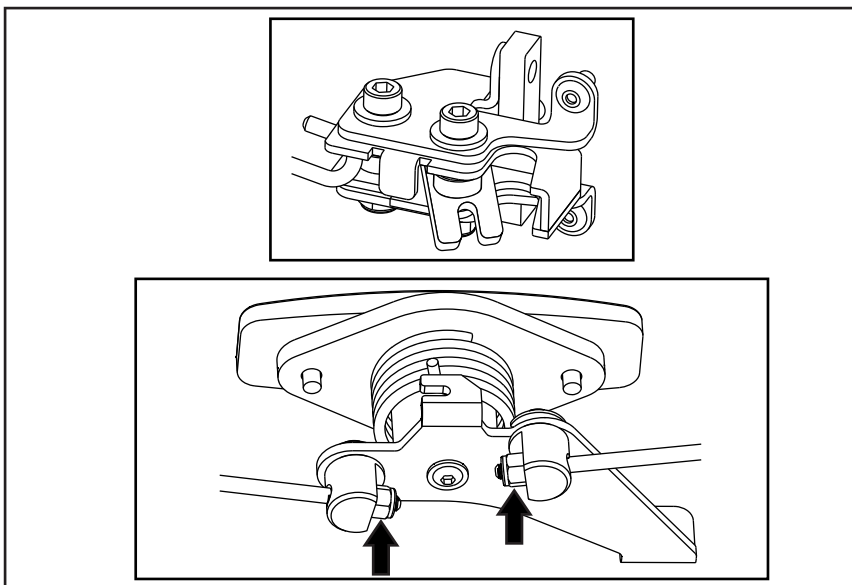
- Attach gas struts to brackets by clipping into place. Ensure narrow end mounts to the vehicle.



Step 11

- Close the cover by pulling from the handle and slowly close it while checking that the cover is correctly lined up to the tub and the latch mechanisms are not touching the tub's side rails.
- Once confirmed the cover is lined up correctly, leave it fully open.

Note: If the cover does not line up correctly, move hinge parts mounted to the front rail forward or backward, one at the time.

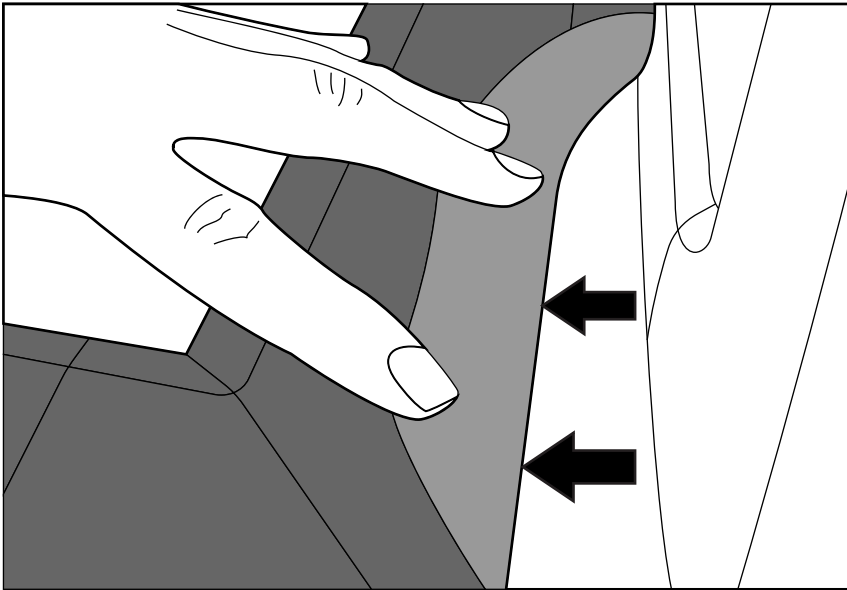


Step 12

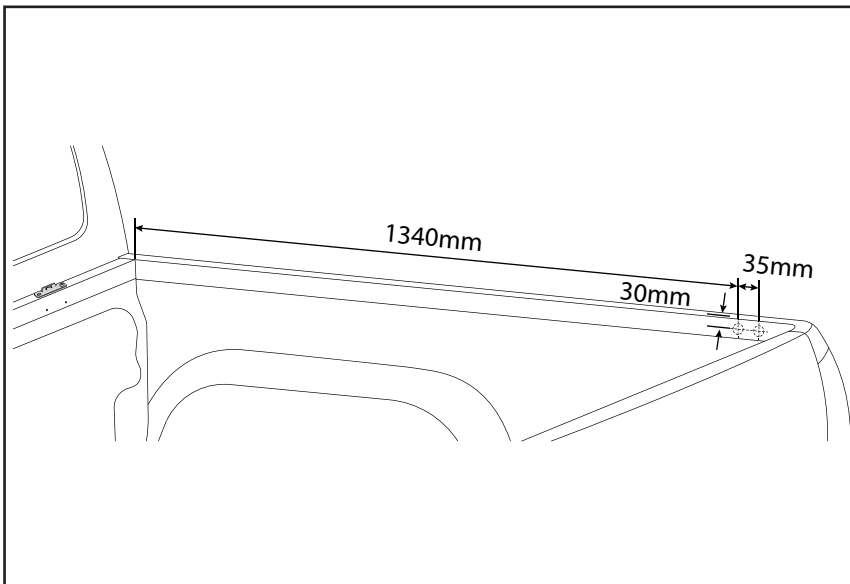
Required tools: 8mm Spanner.

- While the cover is open and tailgate is open. Press the latch rotor to closed position, both sides.
- Rotate the handle slowly to clock-wise, ensure both latches disengage at the same time. Adjustment may be required.

Note: Mechanism can be adjusted by tightening or loosening the latch rod M5 nuts from underneath the cover.

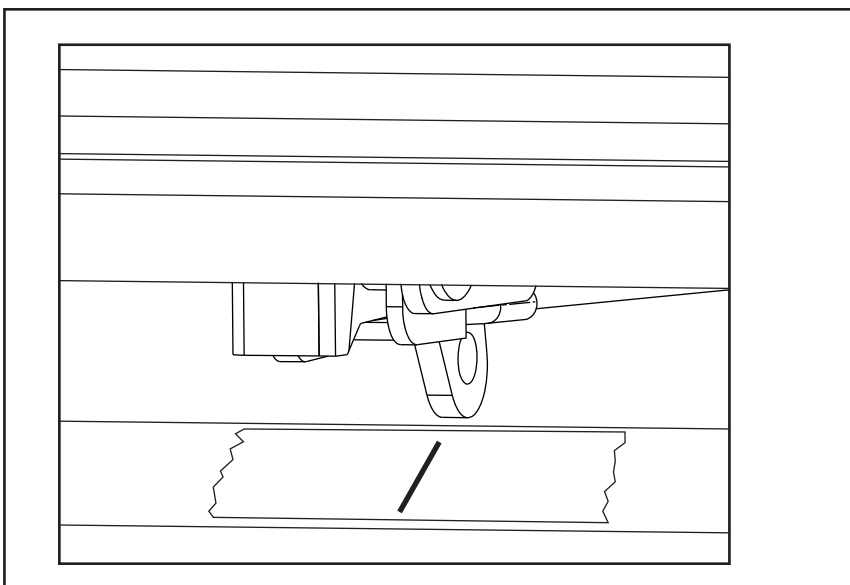
**Step 13**

- While the cover is open, check the front seal's lip is not trapped between the cover and the front rails by bending it up.

**Step 14**

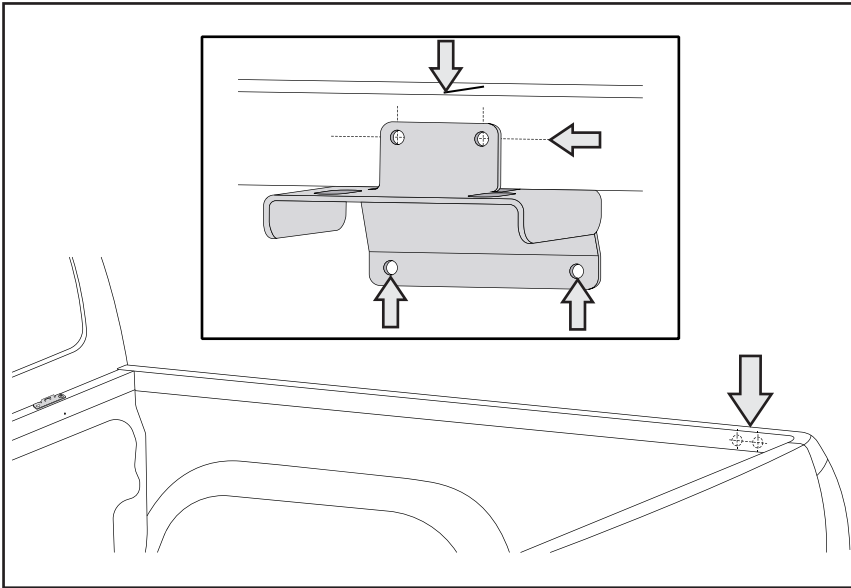
Required tools: Masking Tape, Marker Pen and Tape Measure.

- Apply masking tape to the rear section of the side rails and side wall below.
- Using tape measure, marks line 1340.0 mm from the front rail inner surface.
- Mark another line 35.0 mm, towards the tailgate.
- Mark one more line 30.0 mm from the top of the side rail, crossing two previously marked lines.

**Step 15**

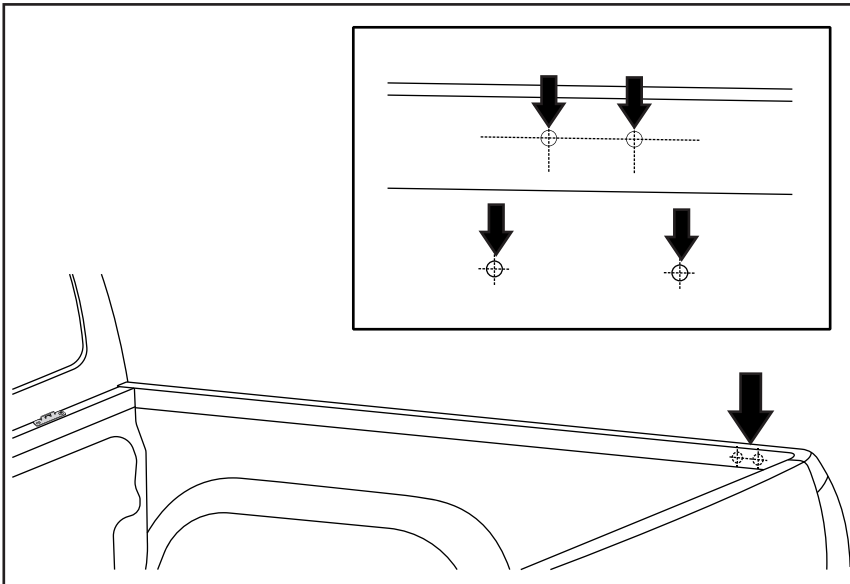
Required tools: Marker Pen

- Lower the tonneau cover. Mark the centre of the tonneau cover latch on the masking tape on the top surface of the side rail.
- Do this for both sides.

**Step 16**

Required tools: Marker Pen.

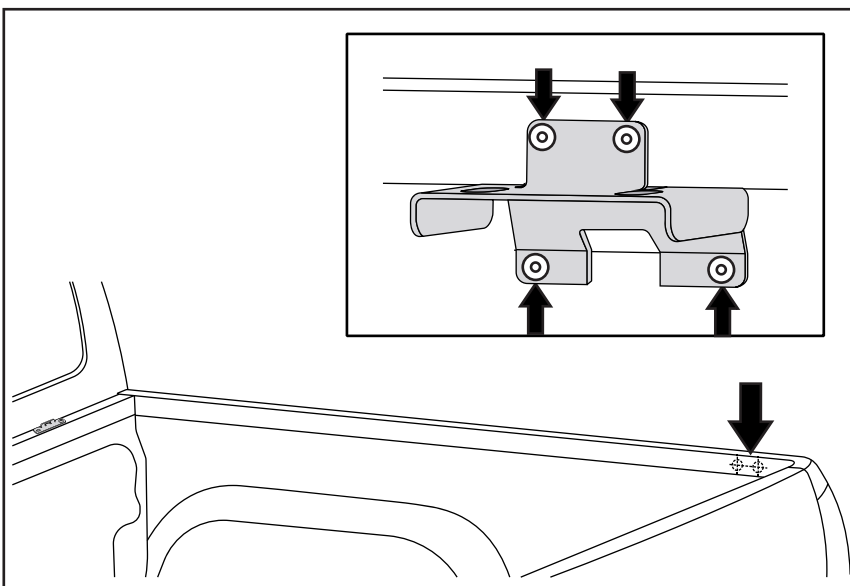
- Take the striker bracket and line up the top holes with marked location in the side rail.
- Mark up the bottom hole location, using the bracket as template.
- Ensure bracket top surface is horizontal and that the line marked in step 17 lines up with the centre of the bracket.
- Do this for both sides.

**Step 17**

Required tools: Power drill, 5mm drill bit and drill bit stopper, centre punch, hammer.

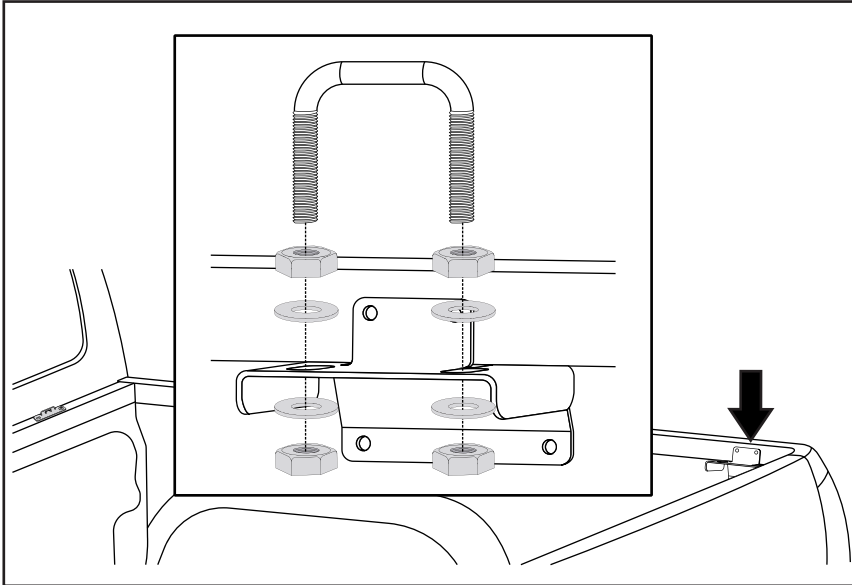
- Centre punch the four hole locations.
- Drill holes using a 5mm drill bit.
- Remove drill burr from the holes.
- Apply rust inhibitor to the drilled holes.
- Repeat for other side.

Note: Use drill stopper set at 10mm to avoid drilling too deep.

**Step 18**

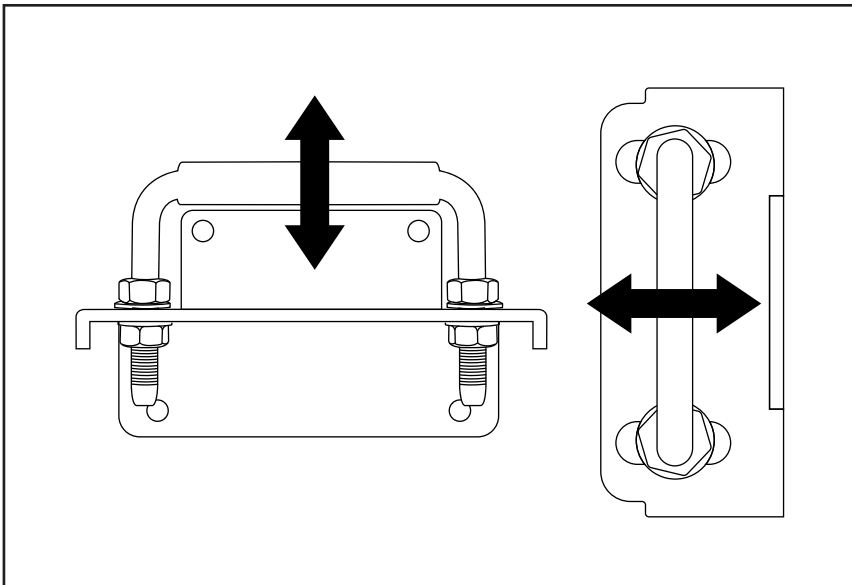
Required tools: Rivet gun.

- Install the bracket using supplied rivets.
- Repeat for other side.

**Step 19**

Required tools: 17mm spanner, 17mm socket and driver.

- Install the striker to the striker bracket using supplied hardware.
- The striker should line up with the top surface of the side rails, fine adjustment required.
- Repeat for other side.

**Step 20**

Required tools: Masking Tape, Marker Pen and Tape Measure.

- Slowly close the cover and move the striker sideways to line it up with the latches. Ensure both sides are lined correctly.
- Adjust the striker height correct by first closing the cover and measuring the gap between the cover and side rails top surface. The gap should be 9.0 mm at the rear, adjust strikers accordingly.
- Tighten the striker nuts to 30.0Nm.

Note: Do Not Close the tailgate.